

PEHP Integrated Care

For Your Employees' Health



peHP Serving the Employees Who Serve Utah



- » For members with conditions such as diabetes, coronary artery disease, congestive heart failure, and chronic obstructive pulmonary disease, as well as chronic medical needs, including mental health. Integrates wellness and pregnancy management programs.
- » Services include post hospital or emergency room follow-up and closing gaps in preventive services and medication utilization.



We mail members custom education materials, such as our four-part educational campaign targeted to members on hypertension medication.



Our Integrated Approach to Disease Management

The most effective care is coordinated. That's where PEHP Integrated Care comes in.

Your employees' health is determined by many disparate factors. They often depend on a broad range of doctors, clinicians, and other resources to meet their healthcare needs. Unfortunately, when each element of care is administered in isolation, coordination of care can be lacking.

As the name suggests, PEHP Integrated Care takes a big-picture approach to your employees' health, incorporating everything from wellness to pharmacy to education to complex care management.

Our approach to disease management addresses the entire spectrum of prevention and care.

With our help, more of your employees can achieve their ideal health.



Members get personal contact and support from PEHP Integrated Care nurses and healthcare coaches by phone and email.



We coordinate care plans with clinicians.

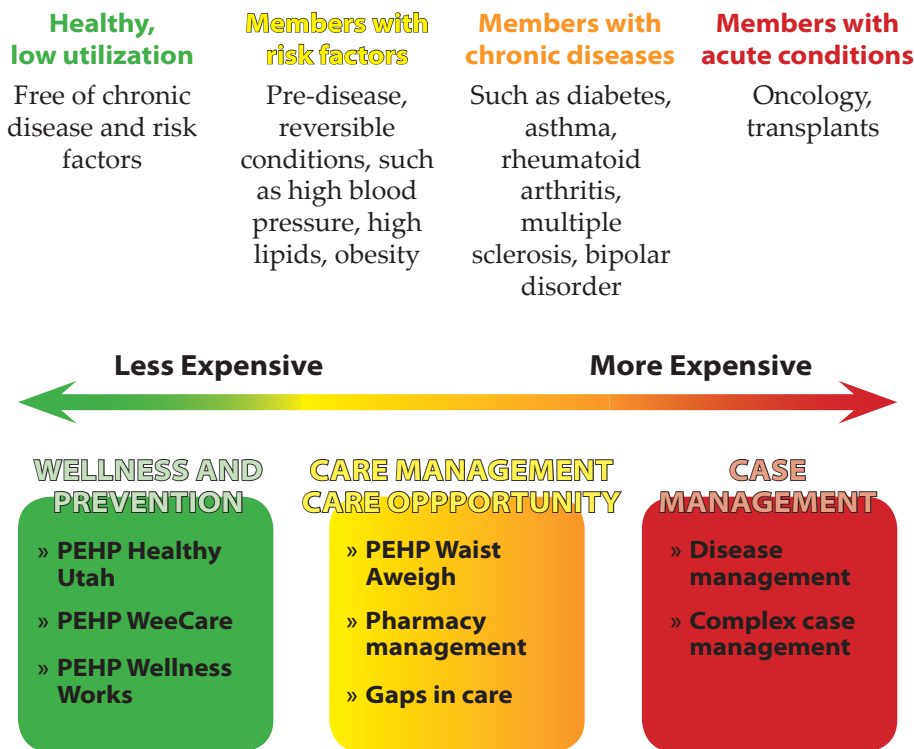


Ask us about how we're saving you money and helping diabetic members get less expensive test strips, short-acting and long-acting insulin.



The Healthcare Continuum

PEHP's philosophy for healthcare management is based on the vision that members all lie in a healthcare continuum. They range from those who are healthy, to those with risk factors, to those with acute episodes requiring medical care, to those with chronic conditions, to those needing end-of-life care. Our goal is to help them all achieve and maintain their best possible health.



coordinating, coaching, helping, monitoring, partnering, educating, guiding, collaborating, improving, intervening, teaching, **integrating**



PEHP Healthy Utah » Wellness program that provides health risk assessments, biometric screenings, and coaching. Provides cash rewards to participating members.



PEHP Waist Aweigh » Proven weight management program for members with a BMI of 30 or higher. It provides support, education, and cash incentives.



PEHP WeeCare » PEHP's prenatal program helps expectant mothers have a healthy pregnancy, a safe delivery, and a healthy baby. If we discover risk factors or complications, our nurses help coordinate the necessary care.

For more information about PEHP Integrated Care,
contact your marketing rep or call PEHP Customer
Service at 801-366-7555 or 800-765-7347

